



SHOREDITCH TREEHOUSE

hello@shoreditchtreehouse.co.uk
+44 (0)7778 712143
<https://www.shoreditchtreehouse.co.uk/>
@shoreditchtreehouse

ABOUT US

SHOREDITCH TREEHOUSE

A secret garden loft, only a five minute walk away from the City of London. The high wooden ceilings, fairy lights and plants are not the only things that make the space so unique.

All furniture in the venue can be moved to best fit your needs. And believe it or not, everything within the space barring the piano can fit in the back room!

- Board Meetings / Team Meetings
- Off-Site Days / Team Away Days / Workshops
- Seminars / Conferences / Networking
- Training Days / Strategy Days
- Photoshoots / Filming
- Product Launches / Album Launches
- Intimate Concerts / Supper Clubs
- Yoga / Sound Baths

Enquire on:

hello@shoreditchtreehouse.co.uk

+44 (0)7778 712143

<https://www.shoreditchtreehouse.co.uk/>

@shoreditchtreehouse



Team Bonding



Networking



Meetings



Workshops

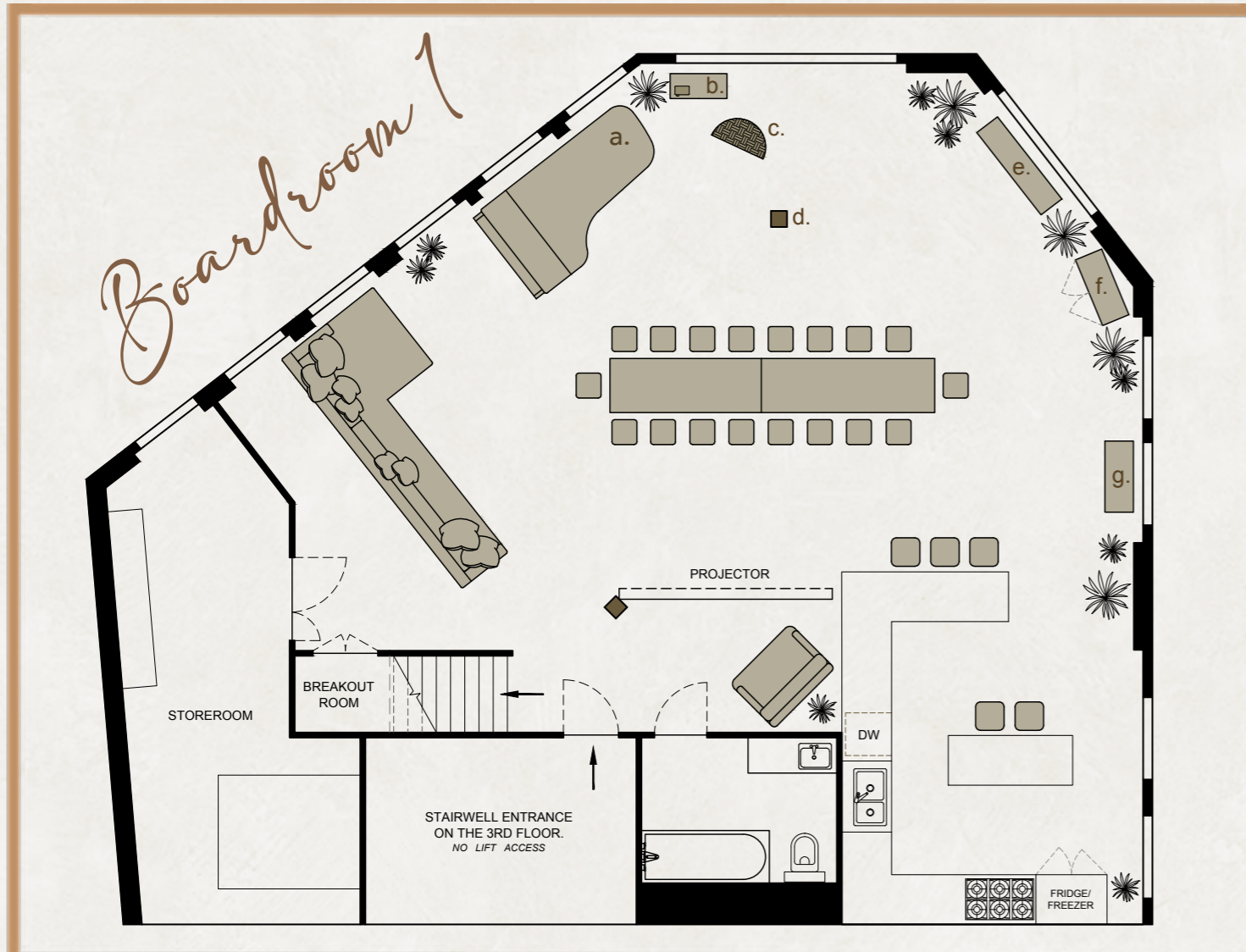


VENUE

CAPACITY & LAYOUTS

All furniture except the Grand Piano can be removed from the venue and placed in the storeroom. Clients are responsible for all furniture removal and replacement unless prior arrangements are made with the venue. The Grand Piano is on wheels and can be relocated within the venue upon prior agreement.

CAPACITY: 18



- a.** Concert Grand Piano
- b.** Projector-stand and projector
- c.** Hanging pod swing
- d.** Structural wooden pillar
- e.** Trunk
- f.** Cabinet
- g.** Trunk

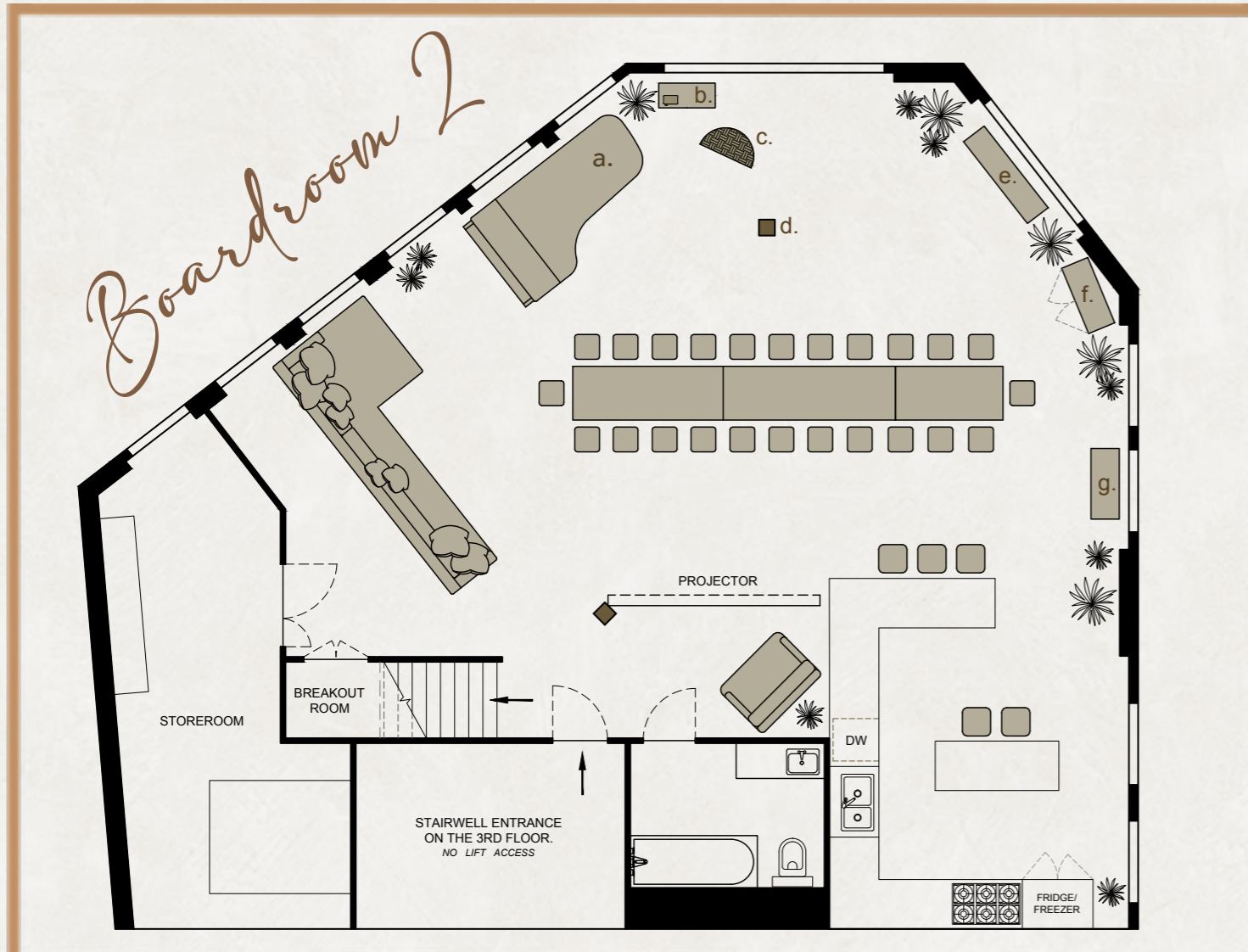


VENUE

CAPACITY & LAYOUTS

All furniture except the Grand Piano can be removed from the venue and placed in the storeroom. Clients are responsible for all furniture removal and replacement unless prior arrangements are made with the venue. The Grand Piano is on wheels and can be relocated within the venue upon prior agreement.

CAPACITY: 26



- a.** Concert Grand Piano
- b.** Projector-stand and projector
- c.** Hanging pod swing
- d.** Structural wooden pillar
- e.** Trunk
- f.** Cabinet
- g.** Trunk

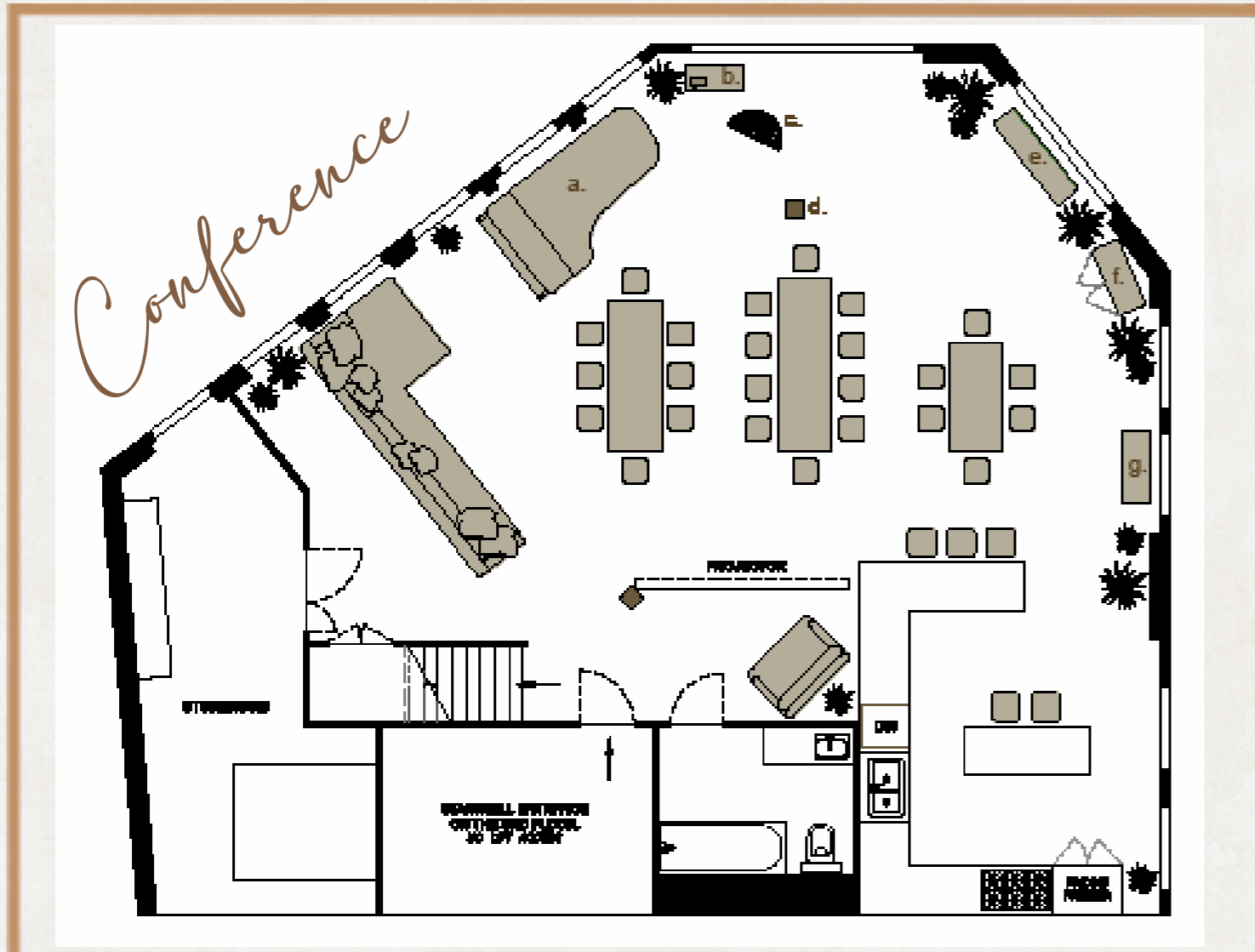


VENUE

CAPACITY & LAYOUTS

All furniture shown can be removed from the venue into the storeroom. Clients are responsible for all furniture removal and replacement unless prior arrangements are made with the venue. The venue can supply up to 60 chairs and any additional seating will need to be hired externally. Any event with more than 40 people will need to include door staff.

CAPACITY: 30



- a. Concert Grand Piano
- b. Projector-stand and projector
- c. Hanging pod swing
- d. Structural wooden pillar
- e. Trunk
- f. Cabinet
- g. Trunk

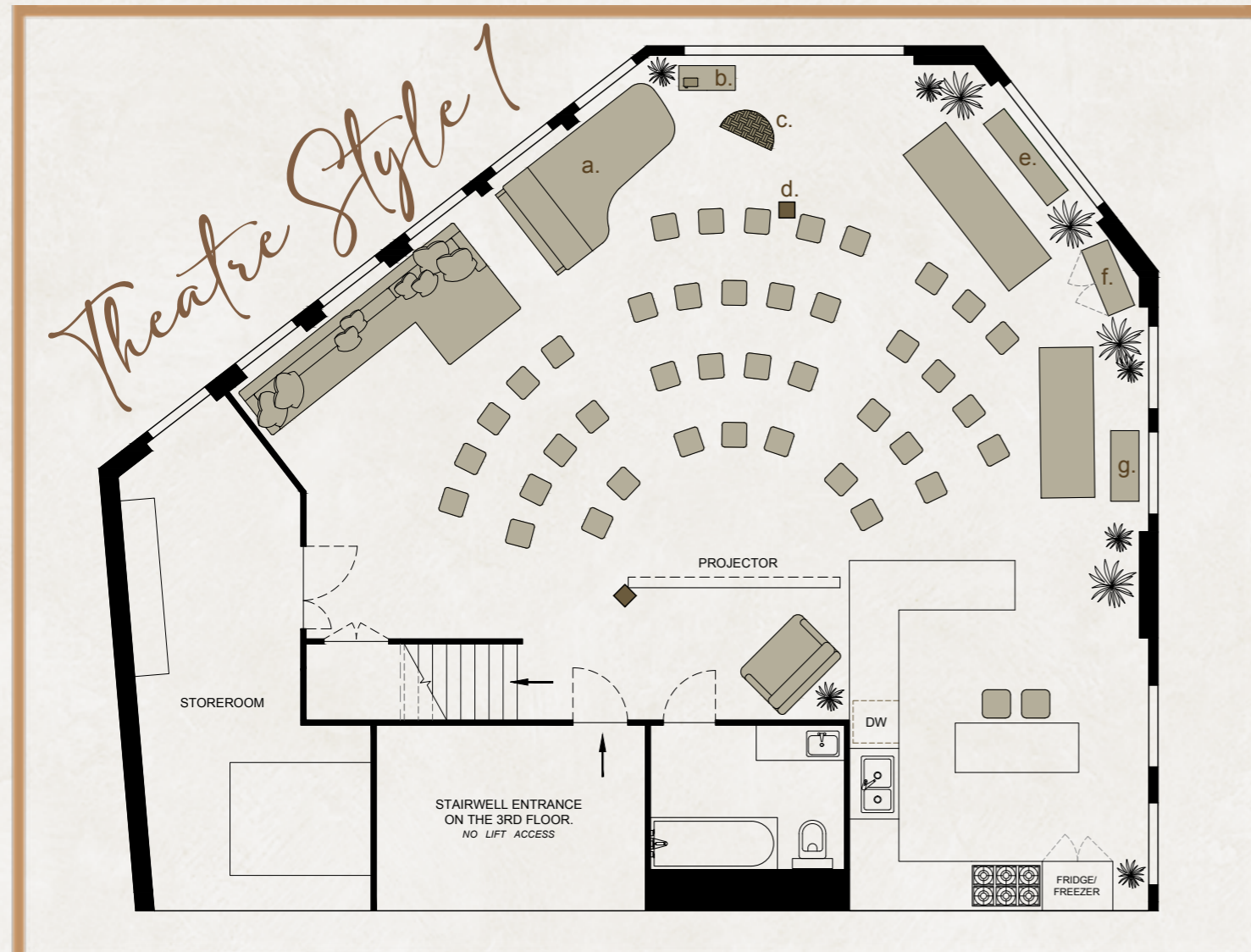


VENUE

CAPACITY & LAYOUTS

All furniture shown can be removed from the venue into the storeroom. Clients are responsible for all furniture removal and replacement unless prior arrangements are made with the venue. The venue can supply up to 60 chairs and any additional seating will need to be hired externally. Any event with more than 40 people will need to include door staff.

CAPACITY: 40



- a. Concert Grand Piano
- b. Projector-stand and projector
- c. Hanging pod swing
- d. Structural wooden pillar
- e. Trunk
- f. Cabinet
- g. Trunk

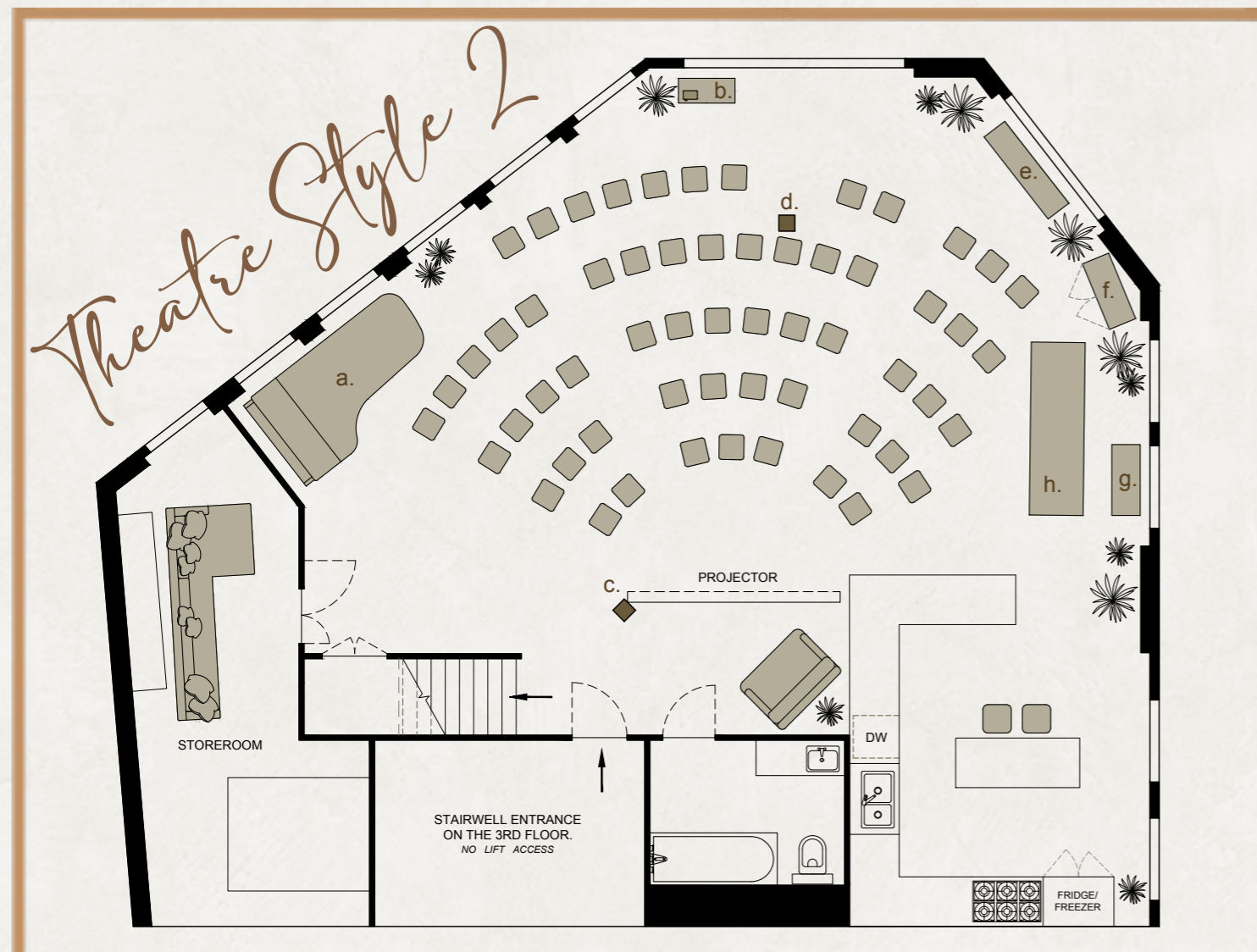


VENUE

CAPACITY & LAYOUTS

All furniture shown can be removed from the venue into the storeroom. Clients are responsible for all furniture removal and replacement unless prior arrangements are made with the venue. The venue can supply up to 60 chairs and any additional seating will need to be hired externally. Any event with more than 40 people will need to include door staff.

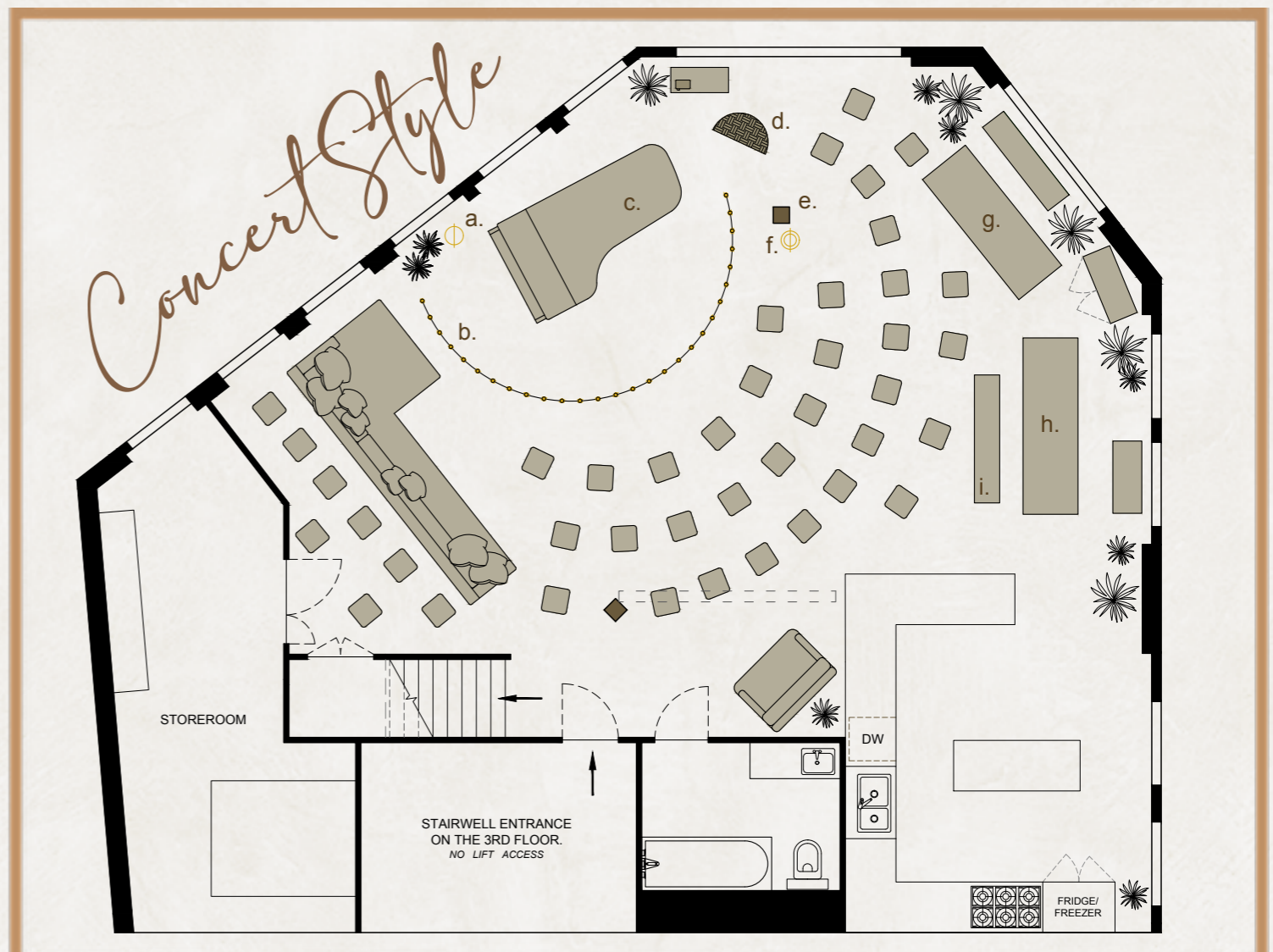
CAPACITY: 60



- a.** Concert Grand Piano
- b.** Projector-stand & projector
- c.** Projector screen
- d.** Structural pillar

- e.** Trunk
- f.** Cabinet
- g.** Table
- h.** Trunk

CAPACITY: 80



- a.** Light (Facing the pianist)
- b.** Fairy lights indicating stage
- c.** Concert Grand Piano
- d.** Hanging pod swing

- e.** Structural wooden pillar
- f.** Light (facing the musicians)
- g. + h.** Tables (Seating 4 people)
- i.** Bench (Seating 4 people)



KITCHEN

Information

The kitchen features; an American-style fridge, a SMEG cooker, a Nespresso Machine, a kettle and unlimited teas, coffee-pods and milk. The fridge will be empty and available for you to use.

We are happy for guests to bring in food and/or organise external catering.

[Click here](#) to find the details of caterers that we recommend and have previously worked with, however, please do feel free to use the caterers of your choice.

KITCHEN INVENTORY:

- Crockery for up to 24 guests (Large plates, small plates & bowls)
- Glasses for up to 24 guests (Tumblers & wine glasses)
- Cutlery for up to 24 guests (Forks, knives & tablespoons)
- Coffee & tea incl. unlimited Grind coffeepods and filter coffee.

For the full kitchen inventory please enquire on:

hello@shoreditchtreehouse.co.uk

+44 (0)7778 712143

<https://www.shoreditchtreehouse.co.uk/>

@shoreditchtreehouse

INVENTORY

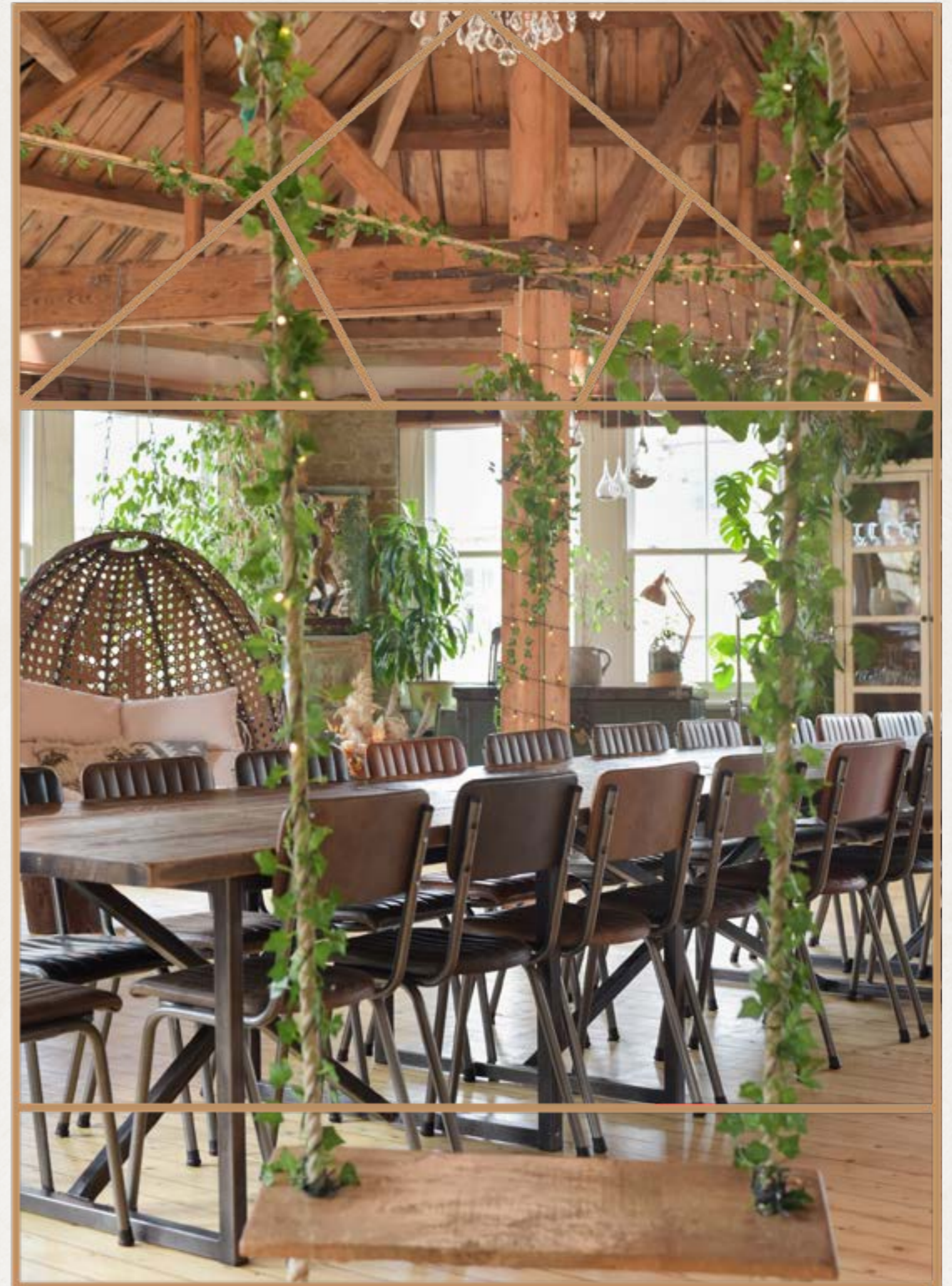
WHAT'S INCLUDED?:

- 3 reclaimed, Timothy Oulton tables measuring:
152 x 107 x 76 cm | 244 x 107 x 76 cm | 213 x 107 x 76 cm
- 60 Arlington leather chairs
- Steinway & Sons Concert Grand Piano in Model D
274 x 156 cm
Tuning of the Steinway Grand Piano is charged at £109
- NEST controlled central heating
- Industrial strength airconditioning

Any additional seating and tables will need to be hired externally. We kindly ask that you do not put items on or have any drinks near the piano.



Chairs & Tables



TECH

AT SHOREDITCH TREEHOUSE

The venue is equipped with a 3 metre wide projector screen, a high lumin LCD projector and quality soundsystem. We have provided an additional document that explains our tech in more detail. A venue manager will be on site help with tech set-up.

APPLE TV



KRK VXT8
SPEAKERS



DEVIALET PHANTOM
WIRELESS SPEAKER



3 METRE SAPPHIRE
PROJECTOR SCREEN
WITH REMOTE



PANASONIC LCD PROJECTOR
WITH REMOTE CONTROL



CHROMECAST



WIRELESS NORWII
PRESENTER CLICKER



ROAD ACCESS

Charlotte Road is an **Ultra Low Emission** street (ULEV), access will be restricted during peak hours **Monday-Friday, 07:00-10:00** and **16:00-19:00**. Access by car is limited between these hours unless the vehicle emits less than 75g/km of CO2.

The venue can provide up to two parking permits for £5 each. The permits allow parking in Hackney Council's '**Residential Zone B**'. There is a loading bay at 46 Great Eastern Street, not even a minute's walk from the venue that can also be used.

PUBLIC TRANSPORT:

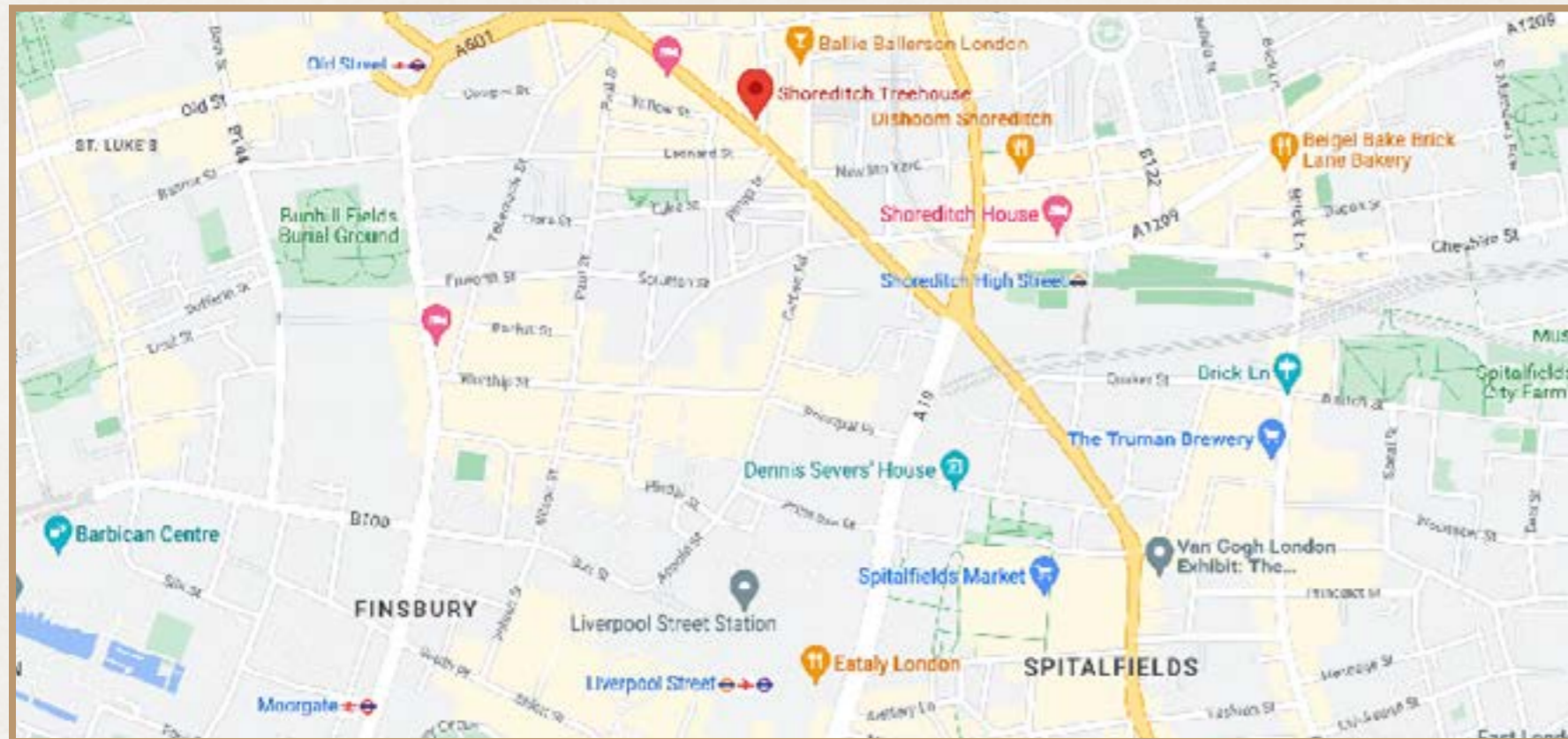
Old Street Station is a 5 minute walk



Shoreditch High Street is a 4 minute walk



Liverpool Street Station is a 7 minute walk




FIND US

Getting Here

ADDRESS:

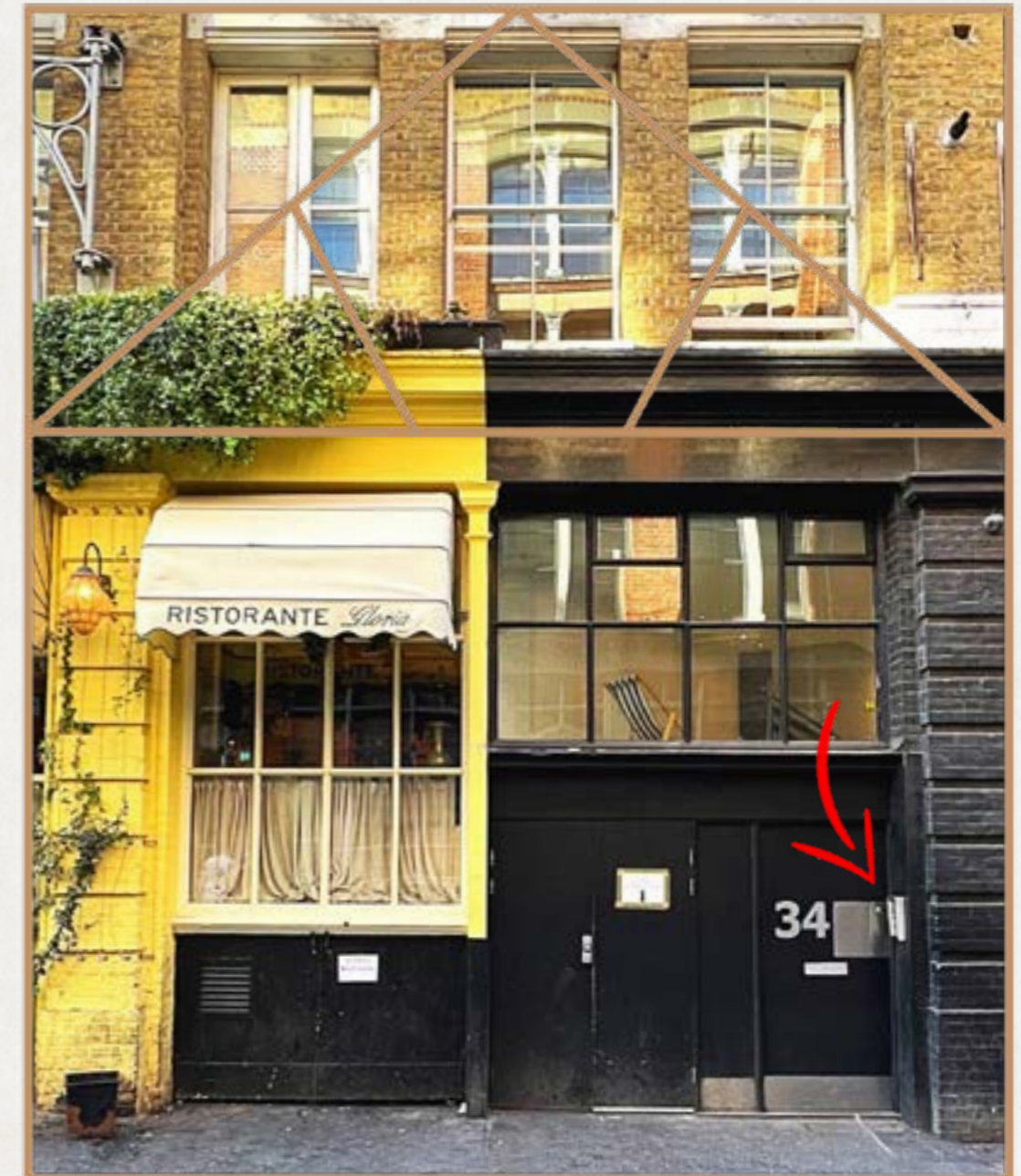
Shoreditch Treehouse

Loft 5 

34 Charlotte Road

London, EC2A 3PB

W3W: frozen.light.friend



PRICING

Information

The space can be hired from **07:00-22:00**. Set up and clear up must be included within your hire time. See below the hire costs for non-ticketed events:

Attendees: Up to 24

Rate Per Hour: £200

Attendees: Up to 40

Rate Per Hour: £250

Attendees: Up to 60

Rate Per Hour: £380

This includes the use of Loft 6

Attendees: Up to 80

Rate Per Hour: £450

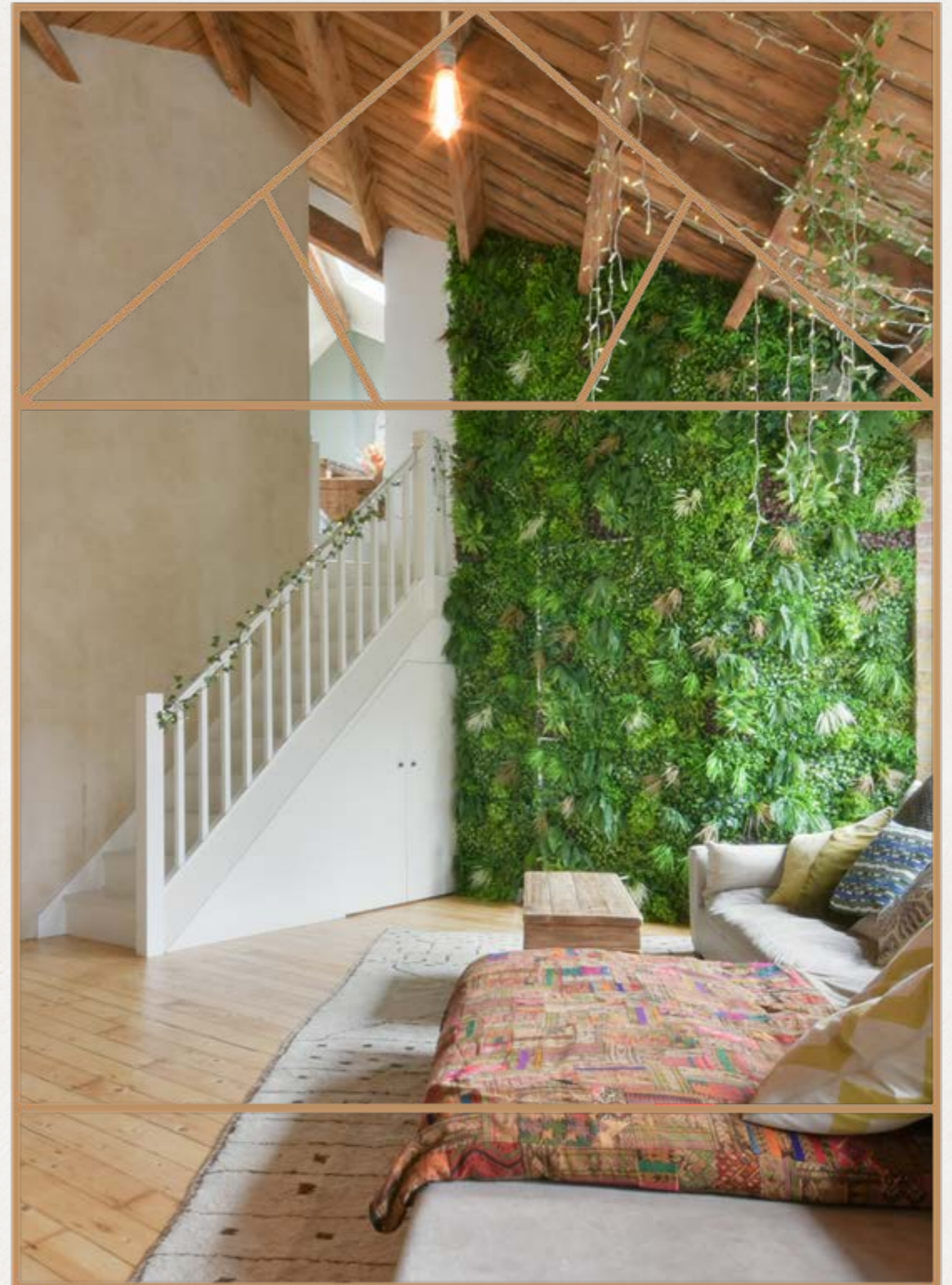
This includes the use of Loft 6

- Minimum Hire of 5 hours -

We ask for a security deposit of **£1000**, which is fully refundable (All deposit returns are processed on Fridays).

Shoreditch Treehouse is a **dry hire*** venue. We hand the venue over to you as shown in the Boardroom 2 floorplan.

** As a dry hire venue we provide the use of the space and our amenities. We are not involved in any catering, moving of furniture or managing of your event. Alcohol is allowed at the venue so long as the event is non ticketed.*



LOFT 6

Loft 6 is the baby sister of Shoreditch Treehouse and is adjacent to the main space. With high ceilings, wooden beams, plants and 4 large windows that surround the venue allowing floods of natural light to come in all day.

A separate Loft 6 Document is available upon request.

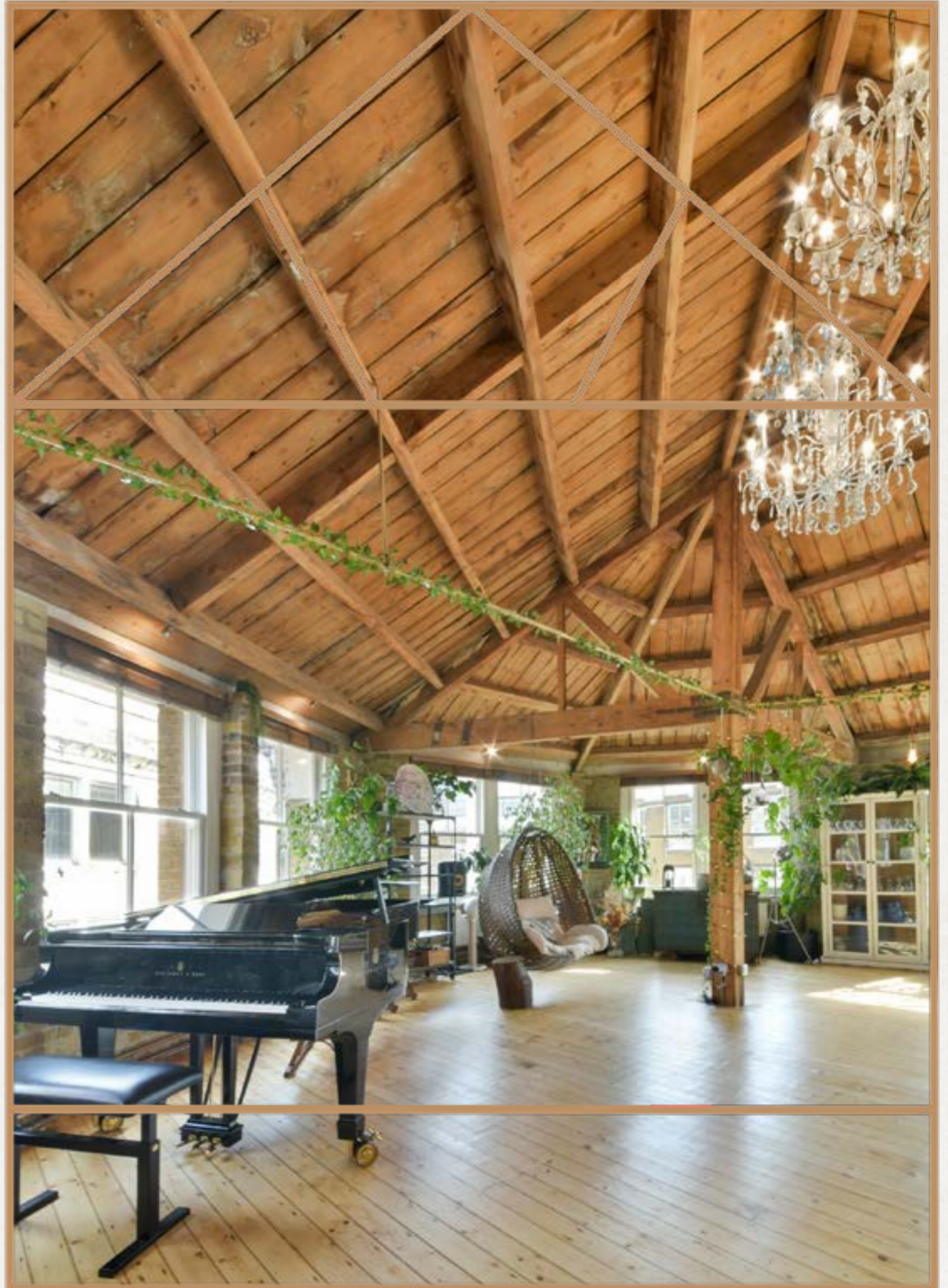
- Super Fast Fibre Optic Broadband
- 75" TV Samsung Frame with Soundbar, Apple TV and Chromecast
- Kawaii Baby Grand Piano
- Air conditioning / Heating through out
- Dry hire (your choice of catering and additional furniture can be brought to venue)
- Tables and chairs (incl. for up to 10 guests)/ Table wear and crockery (for up to 10 guests)
- Unlimited coffee & tea station (incl. Nespresso pods)
- A kitchen, including double oven and 4 gas hobs
- Large Fridge/Freezer

When booking Shoreditch Treehouse for over 40 guests, Loft 6 is included in the hire. This will give you access to extra toilet amenities as well as a lounge area and a kitchen.



HOUSE RULES

- You agree to not provide or sell alcohol on site during ticketed events unless agreed beforehand, as the venue does not hold an alcohol license.
- You agree to no smoking in the property or building premises
- You agree to pay for any damages made to the premises, content, fixtures and fittings over and above normal wear and tear
- You agree to enter and exit the property on time. Any over time, before or after the contracted hours, may be deducted from your security deposit at a rate of £250 per hour in quarter hourly increments
- **You agree not to place anything on or in the piano including any drinks, food, clamps or sticky tape**
- **You agree to notify your guests that no stilettos or sharp heeled shoes can be worn in the property, so no damage is caused to the floor (heel protectors can be provided upon request.)**
- You agree not to cause any damage to the windows, walls, floor or doors of the Property nor to do anything that may be reasonably considered to cause a nuisance or annoyance to neighbours
- You agree to take all necessary steps to safeguard your personal property. No liability to you is accepted in respect of damage to or loss of such property, except where the damage or loss is caused by our negligence
- You cannot allow more people to enter the Property than expressly authorised, nor take pets into the Property unless it has been arranged in advance



Get in touch:

**SHOREDITCH
TREEHOUSE**

hello@shoreditchtreehouse.co.uk
+44 (0)7778 712143
<https://www.shoreditchtreehouse.co.uk/>
@shoreditchtreehouse